

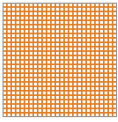


RecScreen®  
3500P

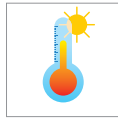
5%



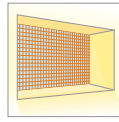
RECASENS  
BCN 1886



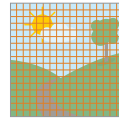
Medium opening



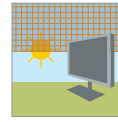
Thermal comfort



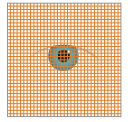
Natural light



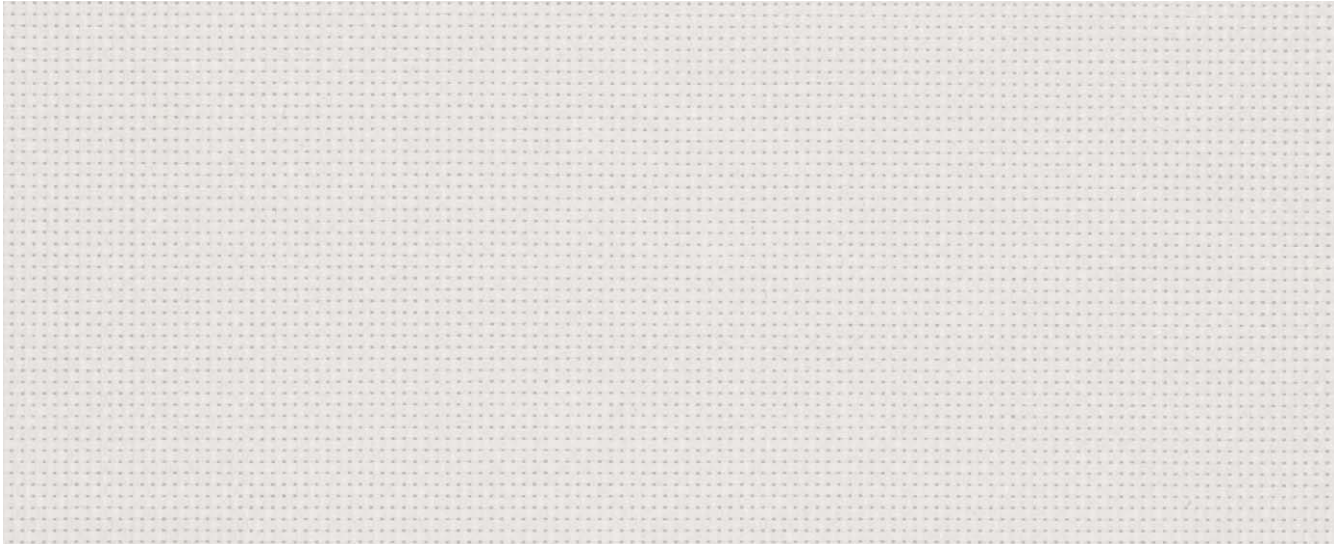
Visibility to the outside



Glare control



Privacy

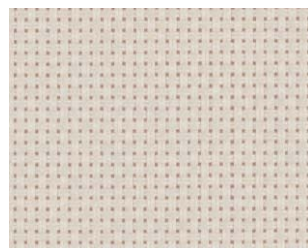


R-000

White-White (\*)



R-001 White-Linen (\*)



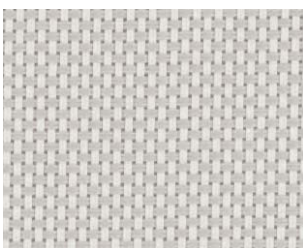
R-100 Linen-Linen



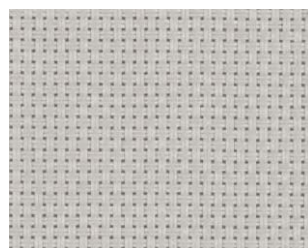
R-002 White-Sable



R-009 White-Gold



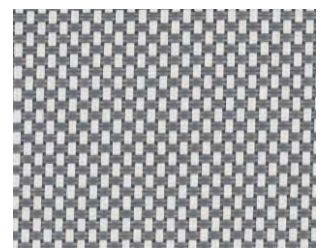
R-004 White-Pearl Gray (\*)



R-400 Pearl Gray-Pearl Gray



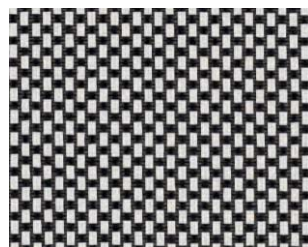
R-008 White-Silver Gray



R-005 White-Dark Gray (\*)



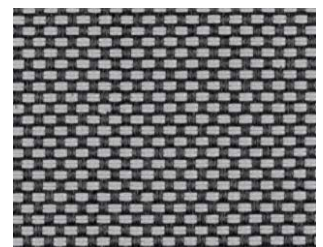
R-405 Pearl Gray-Dark Gray



R-003 White-Black



R-700 Anthracite-Anthracite



R-308 Black-Silver



R-300 Black-Black



R-307 Black-Bronze



R-313 Black-Tobacco



R-309 Black-Gold

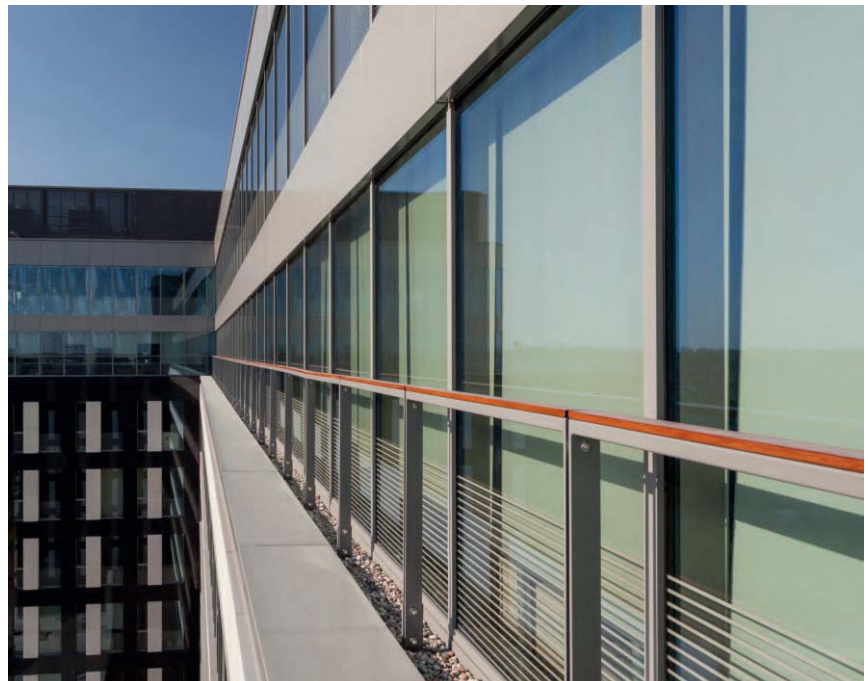
(\*) References available in width 300 cm / 118", 250 cm / 98" and 200 cm / 78"

RECOMMENDED APPLICATIONS - RESIDENTIAL AND TERTIARY

INTERIOR DESIGN AND DECORATION			
INDOOR SOLAR PROTECTION		R	T
Roller blinds or curtains for windows		✓	✓
Roller blinds or curtains for enclosures		✓	✓
Roller blinds for roof windows		✓	✓
Folding blinds		✓	✓
Vertical blinds		✓	✓
Japanese panels		✓	✓
Folding awnings		✓	✓
Shade sails		✓	✓
Tensioned textiles under skylights		✓	✓
INDOOR FURNITURE		R	T
Cushions		✓	✓
Armchairs and sofas		✓	✓ (*)
Seats and chairs		✓	✓ (*)
Footstools and pouffes		✓	✓
INDOOR TEXTILE ARCHITECTURE		R	T
Wall coverings		✓	✓
Ceiling coverings		✓	✓
Ceilings with skylights		✓	✓
Separators and screens		✓	✓
Wrappings for isolated elements		✓	✓
Decorative accessories		✓	✓

FACADES AND ENCLOSURES			
OUTDOOR BLINDS		R	T
Roller blinds for windows or facade awnings		✓	✓
Roller blinds for glazed enclosures		✓	✓
Roller blinds for roof windows		✓	✓
Roller blinds for skylights		✓	✓
AWNINGS		R	T
Roller drop awnings (1)		✓	✓
Vertical or downward awnings		✓	✓
Hoods or fixed canopies		✓	✓
Retractable hoods or Dutch awnings		✓	✓

OUTDOORS AND TEXTILE ARCHITECTURE			
OUTDOOR SOLAR PROTECTION		R	T
Umbrellas and sunshades		✓	✓
OUTDOOR FURNITURE		R	T
Cushions		✓	✓
Sun loungers		✓	✓
Armchairs and sofas		✓	✓
Seats and chairs		✓	✓
Footstools and pouffes		✓	✓



(1) For awnings up to, approximately, 4/5m in line x 3/2.75m extension.  
 (\*) For upholstery of mobile furniture (not for upholstery for fixed seats that make up part of the project in cinemas, theatres, auditoriums, assembly halls, etc.).



RecScreen®  
3500P

## THERMAL FACTORS

RECScreen 3500P 5% openness factor		THERMAL FACTORS											UV
REF.	COLOUR	FABRIC			FABRIC + GLAZING IN PARALLEL POSITION								TUV ( $\tau_{uv}$ )
		TS ( $\tau_{e,B}$ )	RS ( $\rho_{e,B}$ )	AS ( $\alpha_{e,B}$ )	Type C Glazing		Type D Glazing		Type C Glazing		Type D Glazing		
					$g_{tot\ int}$	THERMAL COMFORT CLASS	$g_{tot\ int}$	THERMAL COMFORT CLASS	$g_{tot\ ext}$	THERMAL COMFORT CLASS	$g_{tot\ ext}$	THERMAL COMFORT CLASS	
R-000	White-White	24,3	65,6	10,1	0,36	1	0,25	2	0,17	2	0,11	3	6,1
R-001	White-Linen	21,4	58,1	20,5	0,38	1	0,26	2	0,16	2	0,11	3	5,4
R-002	White-Sable	19,9	49,5	30,6	0,41	1	0,27	2	0,16	2	0,11	3	5,7
R-003	White-Black	8,0	24,4	67,6	0,49	1	0,29	2	0,11	3	0,09	4	5,9
R-004	White-Pearl Gray	17,8	49,6	32,6	0,41	1	0,27	2	0,15	3	0,10	3	6,0
R-005	White-Dark Gray	10,1	31,2	58,7	0,47	1	0,28	2	0,12	3	0,09	4	6,1
R-008	White-Silver Gray	21,0	49,2	29,8	0,41	1	0,27	2	0,17	2	0,11	3	5,9
R-009	White-Gold	10,2	33,3	56,5	0,46	1	0,28	2	0,12	3	0,09	4	6,0
R-100	Linen-Linen	19,5	52,0	28,5	0,40	1	0,26	2	0,16	2	0,11	3	5,0
R-300	Black-Black	5,3	3,4	91,3	0,56	0	0,31	2	0,12	3	0,10	4	5,2
R-307	Black-Bronze	6,5	6,8	86,7	0,55	0	0,30	2	0,12	3	0,10	4	6,0
R-308	Black-Silver Gray	9,3	17,1	73,6	0,51	0	0,29	2	0,13	3	0,10	4	5,8
R-309	Black-Gold	6,2	10,2	83,6	0,53	0	0,30	2	0,12	3	0,09	4	5,7
R-313	Black-Tobacco	5,7	6,1	88,2	0,55	0	0,30	2	0,12	3	0,10	4	5,4
R-400	Pearl Gray-Pearl Gray	15,0	38,1	46,9	0,45	1	0,28	2	0,14	3	0,10	3	5,9
R-405	Pearl Gray-Dark Gray	8,9	22,8	68,3	0,49	1	0,29	2	0,12	3	0,09	4	5,8
R-700	Anthracite-Anthracite	8,7	7,4	83,9	0,54	0	0,30	2	0,13	3	0,10	3	8,1

The  $g_{tot}$  values are provided for standard glazing types C and D. Please contact us to request the  $g_{tot}$  study relating to any other kind of standard glazing or specific glazing for the project.

## THERMAL FACTORS

### FABRIC

- TS ( $\tau_{e,B}$ ):** Solar transmittance factor of the fabric in %  
**RS ( $\rho_{e,B}$ ):** Solar reflection factor of the fabric in %  
**AS ( $\alpha_{e,B}$ ):** Solar absorption factor of the fabric in %

### FABRIC + GLAZING

- $g_{tot\ int}$ :** Total solar energy transmittance factor.  
Glass + fabric in parallel position / Fabric on the inside.  
 **$g_{tot\ ext}$ :** Total solar energy transmittance factor.  
Glass + fabric in parallel position / Fabric on the outside.

### TYPES OF GLAZING

- Type C Glazing:**  $g = 0.59$  Total solar energy transmittance factor  
 $U = 1.20\ W/(m^2.K)$  Thermal transmittance coefficient  
 Double glazing (4mm float + 16mm chamber + 4mm float), with low emission coating in position 3 (outer surface of the indoor glass), chamber filled with argon.
- Type D Glazing:**  $g = 0.32$  Total solar energy transmittance factor  
 $U = 1.10\ W/(m^2.K)$  Thermal transmittance coefficient  
 Double glazing (4mm float + 16mm chamber + 4mm float), with low emission coating in position 2 (inner surface of the outdoor glass), chamber filled with argon.

## ULTRAVIOLET FACTORS

- TUV ( $\tau_{uv}$ ):** Total ultraviolet spectrum transmission factor in %

$$100\% \text{ SOLAR RADIATION} = RS + AS + TS$$

#### RS SOLAR REFLECTION

Solar energy reflected by the material towards the outside

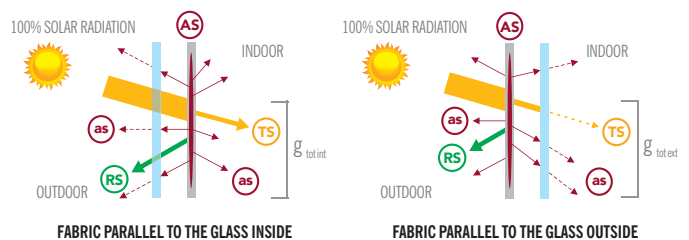
#### TS SOLAR TRANSMISSION

Solar energy that goes through the material.

#### AS SOLAR ABSORPTION

Solar energy absorbed by the material.

as solar radiation absorption in the form of heat outside and inside.



# BIM RECASENS & LLAZA

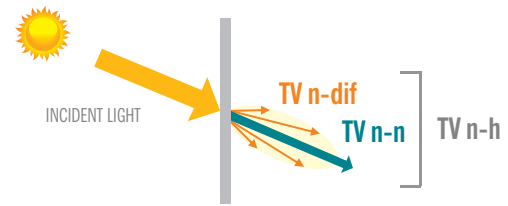
In order to facilitate the work of all those involved in the project, as well as to provide the possibility of performing an energy calculation for our products and adapting it to the specific project data, RECASENS & LLAZA subscribe to the BIM methodology, making their entire range of fabrics converted into BIM aims available to users. The BIM aims of RECASENS & LLAZA are available in Revit® and Archicad® formats, in Spanish and English. At [www.bimobject.com/es](http://www.bimobject.com/es) you will be able to do the following after registering:

- Download products in Revit®, Archicad®, IFC® formats, etc.
- Download catalogues and manuals
- Request information and advice for your project

**bimobject®**

## VISUAL PROPERTIES

RECSCREEN 3500P 5% openness factor		OPTICAL FACTORS
REF.	COLOUR	TV n-h ( $\tau_{v,n-h}$ )
R-000	White-White	21,4
R-001	White-Linen	17,8
R-002	White-Sable	14,4
R-003	White-Black	7,7
R-004	White-Pearl Gray	14,5
R-005	White-Dark Gray	8,7
R-008	White-Silver Gray	17,2
R-009	White-Gold	9,2
R-100	Linen-Linen	15,5
R-300	Black-Black	5,3
R-307	Black-Bronze	6,1
R-308	Black-Silver Gray	8,4
R-309	Black-Gold	6,2
R-313	Black-Tobacco	5,6
R-400	Pearl Gray-Pearl Gray	11,6
R-405	Pearl Gray-Dark Gray	7,5
R-700	Anthracite-Anthracite	8,3



## OPTICAL FACTORS

**TV n-h ( $\tau_{v,n-h}$ ):**  
Normal-hemispheric light transmittance in %

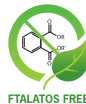


FABRIC CHARACTERISTICS	RECScreen 3500P	STANDARD
Composition	30% PES HT - 70% PVC	
Type of fabric	Panama polyester screen	
Yarn diameter	0,30 mm	
Openness factor	5%	UNE-EN 14500:2010
Colour range	17 colours	
Use	Indoor and Outdoor	

TECHNICAL FEATURES		
Weight	415 g/m <sup>2</sup> / 12,2 oz/yd <sup>2</sup>	UNE-EN 12127:1998
Thickness	0,51 mm	UNE-EN ISO 5084:1997
Width	300 cm / 118"	
Standard roll length	30 m / 32.8 yards	
Tensile strength (warp/weft)	170/170 daN/5 cm	UNE-EN ISO 13934-1:2013
Tear strength (warp/weft)	8/8 daN	UNE-EN ISO 13937-2:2001
Resistance to cold and heat after tropicalisation test	-30°C / +70°C -22°F / 158°F	UNE 53243-22:1978
Colour fastness to artificial light - Xenotest	4 (Good) Grey scale	UNE-EN ISO 105 B02:2014
Colour fastness to artificial weathering - Xenotest	7 (Very good) Blue scale	UNE-EN ISO 105 B04:1998
Antimicrobial activity	Up to 99% bacteria growth reduction	AATCC Test Method 100-2012
	No fungi growth, fungistatic fabric - Grade 0	UNE-EN ISO 846:1998
	Class 1	UNE-EN 13773:2003
Fire classification	B-s2,d0 (on substrate and with air chamber)	UNE-EN 13501-1:2007+A1:2009

QUALITY MANAGEMENT SYSTEM		
ISO 9001		ISO 9001:2015

SAFETY, HEALTH AND ENVIRONMENT		
Odour test at temperature of (40 ± 2)°C	2 (Perceptible, not unpleasant)	
Odour test at temperature of (80 ± 2)°C	2 (Perceptible, not unpleasant)	PV-3900:2000-08
Ultraviolet protection factor - UPF	< 15 (No classification)	AS-NZS 4399:1996



### TEST LABORATORIES



### ADVANTAGES AND BENEFITS

Textile look and feel	Dimensional stability	Rolling quality	No cone effect	No colour distortion	Printable fabrics	Easy to maintain	Energy saving	Cost saving	Stands the test of time



**RECASENS**  
BCN 1886



**HEADQUARTERS:**  
Travessera de Gràcia, 18-20. 08021 Barcelona - Spain  
Phone +34 93 200 27 00 - Fax +34 93 202 19 32  
export@recasens.com / cial@recasens.com  
[www.recasens.com](http://www.recasens.com)